



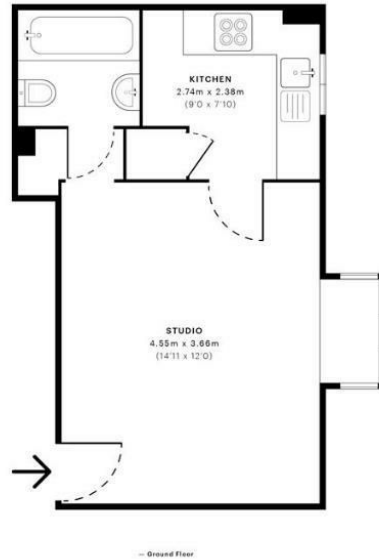
TO LET

Kilberry Close, Isleworth, TW7 4LZ
£1,150 Per Calendar Month

DBK
ESTATE AGENTS

- Available to Rent Immediately! ▪ Studio Apartment
- Ground Floor ▪ Secure Entry System
- Open Plan Living ▪ Communal Garden
- Family Bathroom/ WC ▪ Prime Location
- Syon Lane Station 0.7 Miles ▪ Osterley Underground Station 0.5 Miles

Kilberry Close, TW7
CAPTURE DATE: 16/02/2023 EXTERIOR SCAN POINTS: 11,904,530
GROSS INTERNAL AREA
26.90 sqm / 289.55 sqft



THE PROPERTY

REPOSIT SCHEME AVAILABLE WITH THIS PROPERTY

Available to Rent Immediately!

This ground floor studio apartment offers a perfect blend of comfort, style, and convenience in a highly sought-after location. Designed with modern living in mind, the property features a spacious open plan living area that seamlessly combines lounging, dining, and sleeping spaces. The apartment also includes a bright family bathroom/WC and a secure entry system, providing both practicality and peace of mind.

Residents will enjoy access to a beautifully maintained communal garden, offering a relaxing outdoor retreat ideal for unwinding after a busy day. Positioned in a prime location, the property benefits from excellent transport links, with Syon Lane Station just 0.7 miles away and Osterley Underground Station only 0.5 miles away—making it perfect for commuters and city professionals alike.

With its welcoming layout, modern amenities, and unbeatable accessibility, this studio apartment is an ideal choice for those looking to move in right away and enjoy the best of convenient urban living.